

Say Cheese

Highlighting a few first lactation cows recently completing Honor Roll Records.

Avi-Lanche

Avi-Lanche Prizm Brynn 25666, 85%

1-7 305 19,610 4.6% 893 3.6% 713 101DCR
 Honor Roll Record with 3,318 m.e. cheese

Sire: Ahlem Regency Prizm

Grandam: JX Avi-Lanche Isaac Brynn 14069 {6}, 88%
 3-10 287 19,680 4.9% 955 3.7% 730 102DCR

JX Avi-Lanche Messi Gypsy 25496 {4}, 82%

1-9 305 19,140 4.9% 929 3.9% 756 101DCR
 Honor Roll Record with 3,339 m.e. cheese

Sire: JX Faria Brothers Messi {4}-ET

From the same maternal line as:

JX Avi-Lanche Reno Gypsy 13939 {2}, 83%
 3-7 305 17,810 5.1% 902 3.7% 667 103DCR

D&E Viceroy Virtue 25500, 81%

1-8 305 21,080 4.5% 948 3.6% 750 101DCR
 Honor Roll Record with 3,448 m.e. cheese

Sire: CDF Viceroy-ET

Great-Grandam: All Lynns Impuls Virtue-ET, 90%
 5-1 305 25,550 5.0% 1,282 3.9% 987 93DCR

JX Avi-Lanche Future Sal 25538 {4}, 81%

1-8 296 20,650 5.0% 1,026 3.5% 725 100DCR
 Honor Roll Record with 3,505 m.e. cheese

Sire: JX Faria Brothers Future {3}-ET

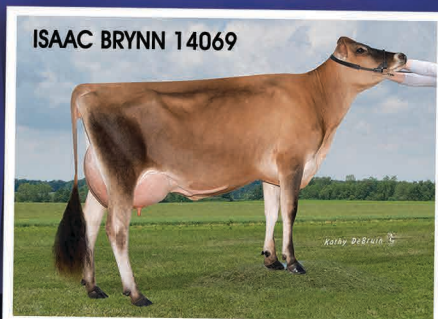
Maternal sister to dam: JX D&E Thor Sal 13672 {4}, 82%
 5-6 305 21,200 5.0% 1,069 3.7% 789 102DCR

JX Avi-Lanche Lynyrd Marvell 25624 {6}, 82%

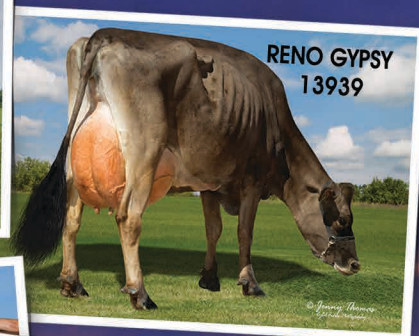
1-8 290 18,800 4.8% 896 3.6% 682 101DCR
 Honor Roll Record with 3,320 m.e. cheese

Sire: JX Avi-Lanche Lhead Lynyrd {6}

From the same maternal line as:
 JX Avi-Lanche Bricade Marvell 25364 {4}, 81%



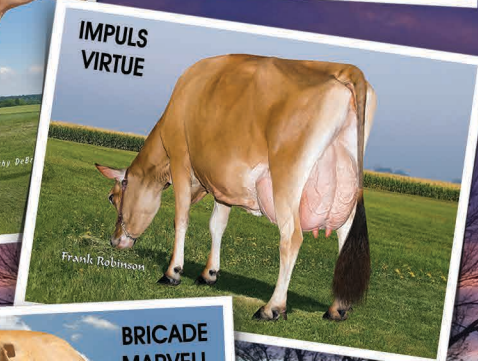
ISAAC BRYNN 14069



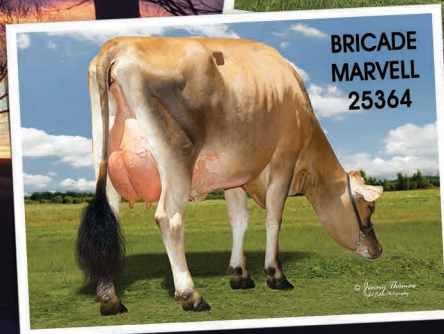
RENO GYPSY 13939



THOR SAL 13672



IMPULS VIRTUE



BRICADE MARVELL 25364



AVI-LANCHE JERSEYS

Visit us on the web at <http://avilanche.usjerseyjournal.com/>

The Richard Avila Family | Jennifer, Sidney and Caitlin Avila

13390 U.S. Hwy. 385, Dalhart, Texas 79022

Jorge Estrada, Dairy Herd Manager • 806/333-5142 • Email: jaestrada1088@gmail.com

Alex Steer, Genetics • 806/884-9072 • Email: steer@vt.edu



D & E JERSEYS



The Donald S. Sherman Family

Elsa Sherman and Wyatt Taylor