

# IT'S ALL IN A *Days Work*

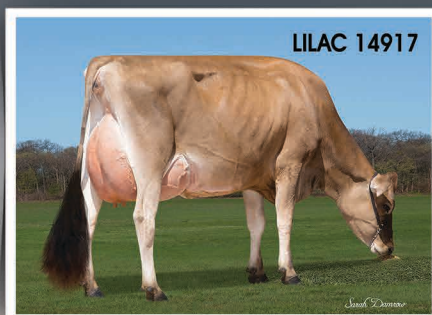
Highlighting a few with  
 good work ethics!



VIRTUE 18148



POEM 25016



LILAC 14917



LETA 25006

## JX Avi-Lanche Campeone Virtue 18148 {4}-ET, 88%

2-9 305 20,780 5.0% 1,037 3.9% 816 102DCR

Fresh January 17 to start her third lactation and  
 looking great! She had a calf by CALIBAN.

JX CAMPEONE {3} x 87% JX SIXTYNINE {3} x All Lynns Impuls  
 Virtue-ET, 90% x D&E Paramount Violet, 90%

## Avi-Lanche Saban Fawn 17461, 91%

2-9 297 19,420 5.5% 1,064 4.1% 797 102DCR

Daughters by JX SHOCK {5} and JX PECOS {3}.

She is due August 17 to JX GALLANTRY {4}.

SABAN-P x 83% SPARKY x 84% CARRIER

## D&E Milton Poem 25016-ET, 88%

2-7 305 22,890 4.1% 941 3.7% 852 102DCR

3-8 160 12,670 4.6% 589 3.9% 488 RIP

26,450 — 1,167 — 1,035 PME

Daughters by JX SHOCK {5}, JX STONEY {3} and LOOT.

MILTON x 90% DAYBREAK x 84% HEADLINE

## JX Avi-Lanche Marlo Leta 25006 {3}-ET, 81%

3-8 184 14,300 5.2% 739 3.9% 561 RIP  
 26,250 — 1,292 — 1,033 PME

Daughters by JX MALDINI {4}, BARRICADE,  
 JX ENZO {3} and JX ALBION {3}.

JX MARLO {2} x JX MR COOL {4} x 90% VALENTINO

## JX Avi-Lanche Golda Lilac 14917 {4}, 87%

3-10 305 23,220 4.5% 1,050 3.9% 899 102DCR

5-0 211 18,980 4.8% 902 3.8% 713 RIP

28,260 — 1,383 — 1,078 PME

Her son, 29JE4107 JX LONZO {3}, has daughters in the herd  
 and they look amazing. She is due June 9 to CALBAN.

JX GOLDA {3} x 86% PAUL x 90% ABE



## AVI-LANCHE JERSEYS

Visit us on the web at <http://avilanche.usjerseyjournal.com/>

The Richard Avila Family | Jennifer, Sidney and Caitlin Avila

13390 U.S. Hwy. 385, Dalhart, Texas 79022

Jorge Estrada, Dairy Herd Manager • 806/333-5142 • Email: [jaestrada1088@gmail.com](mailto:jaestrada1088@gmail.com)

Alex Steer, Genetics • 806/884-9072 • Email: [steer@vt.edu](mailto:steer@vt.edu)

[www.facebook.com/thehappiestcows](http://www.facebook.com/thehappiestcows)



## D & E JERSEYS

The Donald S. Sherman Family  
 Elsa Sherman and Wyatt Taylor