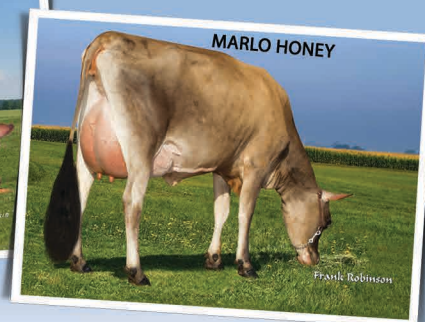


# OUR HEIFERS ARE *Blooming* from two of our favorite families.



## JX Avi-Lanche Dashiell Dede 30460 {5}

*Beginning to IVF her to female sorted semen.*

**+810M +\$543CM +4.9PL GJPI +133**

CDCB: GPTA S 1/21 71%R BBR 100 JH1C JNSF

Sire: JX Avi-Lanche Viceroy Dashiell {6}

Dam: JX Avi-Lanche Baltazar Dede 25749 {4}, 81%

1-9 305 19,420 5.0% 971 3.8% 736 RIP  
 25,250 — 1,252 — 949 PME

*She's due May 25 to JX GALLANTRY {4}.*

Grandam sired by JX MARLO {2} — Maternal sister to grandam:

**JX Avi-Lanche Commissionr Dede 13710 {5}, 92%**

5-5 305 27,110 4.6% 1,256 3.7% 1,015 102DCR

3<sup>rd</sup> Dam: **Avi-Lanche Milton Dede 8232 {5}, 86%**

3-8 305 22,100 5.1% 1,125 3.8% 837 103DCR

*Just freshened (January 19, 2021) on her sixth lactation.*

## JX Avi-Lanche Stoney Dede 26361 {4}-ET, 82%

1-9 201 9,940 5.4% 539 3.8% 379 RIP  
 20,510 — 1,125 — 787 PME

**0.19%F +53F 0.06%P +22P +4.8PL**

**GJUI +13.1 GJPI +126**

CDCB: GPTA S 1/21 78%R BBR 100 JH1F JNSF

*She has a JX GOT JIGGY {6} June 2020 daughter and on the list to be genotyped this month.*

*"26361" is due November 2 to STURGIS.*

Sire: JX Spring Creek Marlo Stoney {3}-ET

Dam: **JX Avi-Lanche Volcano Dede 15794 {5}, 86%**

4-1 305 24,120 4.2% 1,011 3.3% 802 102DCR  
*Due February 15, 2021 to JX CRADIFF {4}.*

Grandam: **JX D&E Hugo Dede 4579 {4}, 83%**

*Fresh in December on her ninth lactation.*

## JX Avi-Lanche Stoney Honey 27276 {4}, 81%

*Beginning to IVF her to female sorted semen.*

1-7 140 8,490 5.4% 461 4.0% 335 RIP  
 32,120 — 1,613 — 1,313 PME

**+0.25%F +54F +0.09%P +18P  
 +\$519CM GJUI +12.6 GJPI +136**

CDCB: GPTA S 1/21 78%R BBR 100 JH1F JNSF

*Her GISLEV son is heading to ABS Global. She was served to TENPENNY.*

Sire: JX Spring Creek Marlo Stoney {3}-ET

Maternal sister: **JX Avi-Lanche Marlo Honey 16794 {3}-P, 90%**

2-11 305 21,050 4.6% 970 3.6% 760 102DCR

Dam: **Avi-Lanche Limelight Honey 14077-P, 86%**

5-0 305 23,700 4.8% 1,133 3.8% 904 102DCR

*Calved in December with her fifth calf, a JX DASHIELL {6}.*



## AVI-LANCHE JERSEYS *Visit us on the web at <http://avilanche.usjerseyjournal.com/>*

The Richard Avila Family | Jennifer, Sidney and Caitlin Avila

13390 U.S. Hwy. 385, Dalhart, Texas 79022

Jorge Estrada, Dairy Herd Manager • 806/333-5142 • Email: [jaestrada1088@gmail.com](mailto:jaestrada1088@gmail.com)

Alex Steer, Genetics • 806/884-9072 • Email: [steer@vt.edu](mailto:steer@vt.edu)

[www.facebook.com/thehappiestcows](http://www.facebook.com/thehappiestcows)



## D & E JERSEYS

The Donald S. Sherman Family  
 Elsa Sherman and Wyatt Taylor