

Follow her to  
 the end of  
 the Rainbow

Juniors, she sells on November 6:

**JX Avi-Lanche Jiggy Dede 31144 {5}**

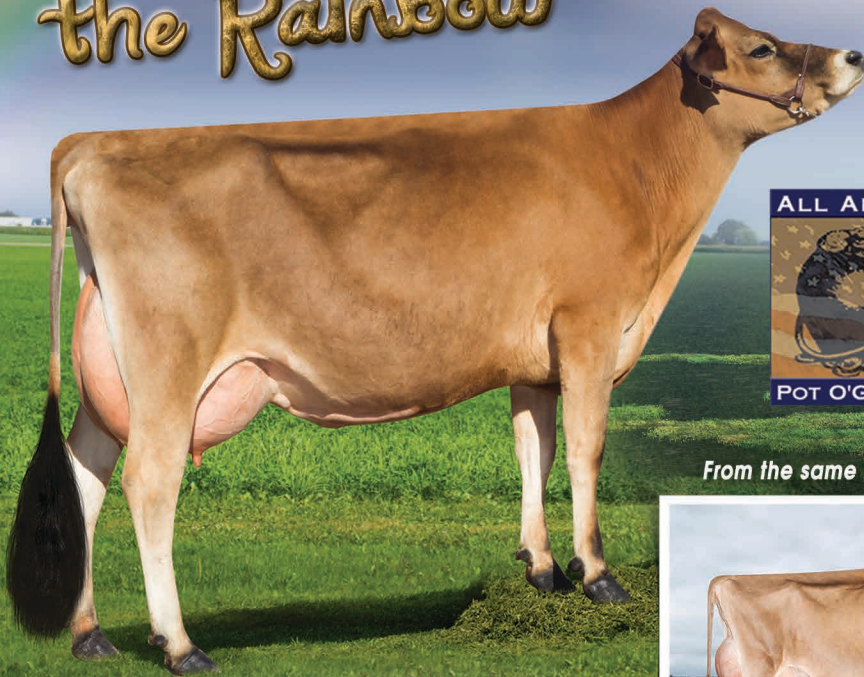
+901M +0.07%F +60F +0.03% +39P +\$664CM

+5.1PL GJPI +134 CDCB: GPTA S 9/21 74%R BBR 100 JH1F JNSF

Born: June 15, 2020 Sire: JX Kash-In Got Jiggy {6}-ET

Due to sexed JX ARCHIE {5} on February 7. She's a donor dam.

Dam is a VG-82% at 2-3 sired by JX STONEY {3}



From the same maternal line



▲ Grandam: **JX Avi-Lanche Volcano Dede 15794 {5}, VG-86%**

4-1 305 24,120 4.2% 1,011 3.3% 802 102DCR

Great-Grandam:

**JX D&E Hugo Dede 4579 {4}, VG-83%**

8 lactations over 20,000M actual

4-9 299 26,150 4.0% 1,054 3.4% 892 103DCR

Our "Dede" family goes back to breeding of Maplerow Farm, Vt., from a purchase we made from them in 1996.

Above "JX Milton Dede 8232 {5}, VG-86%, 4 lacts. over 22,000M and 1,000F

Above right "JX Commisionr Dede 13710 {5}, E-92%, with over 27,000M

"JX News Dede 16514 {6}, VG-83%, with over 24,970M actual

Bid last in Louisville, Ky!



**AVI-LANCHE JERSEYS**

Visit us on the web at <http://avilanche.usjerseyjournal.com/>

The Richard Avila Family | Jennifer, Sidney and Caitlin Avila

13390 U.S. Hwy. 385, Dalhart, Texas 79022

Jorge Estrada, Dairy Herd Manager • 806/333-5142 • Email: [jaestrada1088@gmail.com](mailto:jaestrada1088@gmail.com)

Alex Steer, Genetics • 806/884-9072 • Email: [steer@vt.edu](mailto:steer@vt.edu)



**D & E JERSEYS**

The Donald S. Sherman Family

Elsa Sherman and Wyatt Taylor