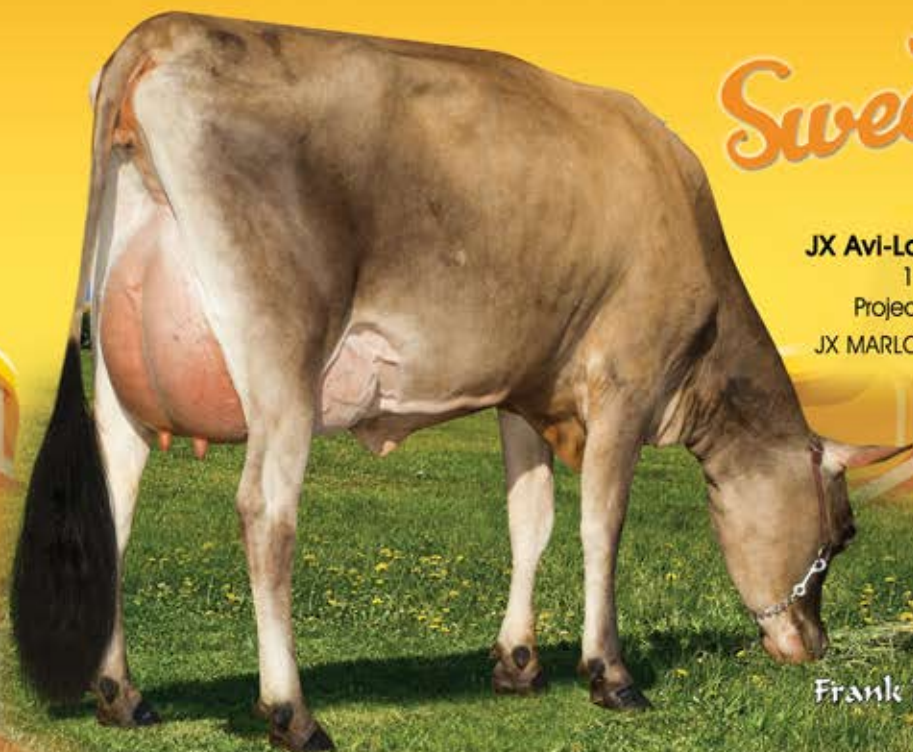


Sweet HONEY



JX Avi-Lanche Marlo Honey 16794 {3}-P, 86%

1-9 305 17,340 4.8% 839 3.7% 648

Projected to 20,792M, 967F, 816P actual at 2-11

JX MARLO {2} x VG-86% LIMELIGHT x E-92% VALENTINO

Frank Robinson

Her Milking Daughters

JX Avi-Lanche Garnett Honey 25271 {4}-P-ET

Projected to 23,869—1,106—892 ME at 1-10

Type +1.9 GJUI +26.3 GJPI +130

CDCB: GPTA S 2/20 71%R BBR 92 JH1F

Sire: JX Faria Brothers Kevin Garnett {3}-ET

JX Avi-Lanche Barricade Honey 25563 {4}-P-ET

Projected to 20,251—1,087—808 ME at 1-7

GJPI +143 CDCB: GPTA S 2/20 74%R BBR 100 JH1F

Sire: Cal-Mart Barricade

JX Avi-Lanche Jodeci Honey 25327 {4}-ET, 82%

Projected to 26,852—1,267—1,040 ME at 1-7

GJPI +145 CDCB: GPTA S 2/20 71%R BBR 100 JH1F

Sire: JX Faria Brothers Jodeci {3}

JX Avi-Lanche Gunsmoke Honey 25669 {4}-P-ET

Projected to 26,852—1,267—1,040 ME at 1-7

GJPI +130 CDCB: GPTA S 2/20 71%R BBR 93 JH1F

Sire: JX Highview Gunsmoke {3}



AVI-LANCHE JERSEYS

Visit us on the web at <http://avilanche.usjerseyjournal.com/>

The Richard Avila Family | Jennifer, Sidney and Caitlin Avila

13390 U.S. Hwy. 385, Dalhart, Texas 79022

Jorge Estrada, Dairy Herd Manager • 806/333-5142 • Email: jaestrada1088@gmail.com

Alex Steer, Genetics • 806/884-9072 • Email: steer@vt.edu

www.facebook.com/thehappiestcows



D & E JERSEYS



The Donald S. Sherman Family

Elsa Sherman and Wyatt Taylor