

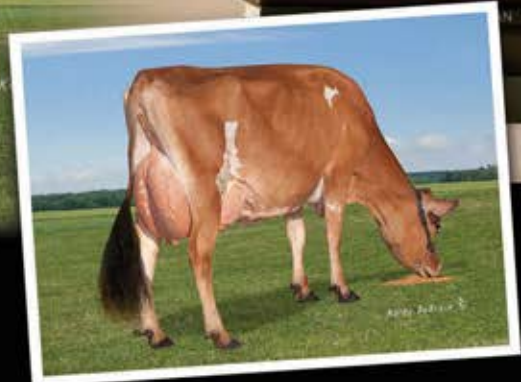
*Becoming  
 a classic!*

507JE1722 JX Avi-Lanche Viceroy DASHIELL {6}-ET

**DASHIELL**

+5.8PL +0.4DPR +1,161M +0.09%F +0.06%P  
 +128CFP +\$685CM +1.4Type +192GJPI  
CDCB: GPTA 12/19 76%R BBR 100 JH1C

- 14<sup>th</sup> for GJPI among "G" code bulls HR or GR 4-6 and BBR 100
- Ranks very high with DWP\$



grandam on left; dam on right

Dam: **Avi-Lanche Commisionr Dede 13710 {5}, 91%**  
 2-10 305 22,020 5.0% 1,092 3.8% 833

She is soon due to calve to JX URLACHER {6}. This will be her fourth lactation.

Grandam: **JX Avi-Lanche Milton Dede 8232 {5}, 86%**  
 2-7 305 22,100 4.9% 1,088 3.6% 801  
 3-8 305 22,100 5.1% 1,125 3.8% 837  
 5-7 305 22,580 4.6% 1,029 3.5% 798

Great-Grandam: **JX D&E Hugo Dede 4579 {4}, 83%**  
 Seven completed lactations; all over 20,000 lbs. milk actual

Contact your Select Sires  
 representative to put DASHIELL  
 to work in your herd!



**YOUR SUCCESS** *Our Passion.*

Phone: (614) 873-4683 ♦ [www.selectsires.com](http://www.selectsires.com)



**AVI-LANCHE JERSEYS**

Visit us on the web at <http://avilanche.usjerseyjournal.com/>

The Richard Avila Family | Jennifer, Sidney and Caitlin Avila

13390 U.S. Hwy. 385, Dalhart, Texas 79022

Jorge Estrada, Dairy Herd Manager • 806/333-5142 • Email: [jaestrada1088@gmail.com](mailto:jaestrada1088@gmail.com)

Alex Steer, Genetics • 806/884-9072 • Email: [steer@vt.edu](mailto:steer@vt.edu)

[www.facebook.com/thehappiestcows](http://www.facebook.com/thehappiestcows)



**D & E JERSEYS**

The Donald S. Sherman Family  
 Elsa Sherman and Wyatt Taylor