

Daughters of the #1 Active A.I. Sire JX Sunset Canyon GOT MAID {5}-ET

are the

Cream of the Crop

JX Avi-Lanche Got Maid Plum 19432 {3}-ET

Projected to 29,071—1,294—1,055 ME at 1-7

+1,893M +75F +68P +\$661CM GJPI +198

CDCB: GPTA S 12/19 77%R BBR 90 JH1F

Daughter by JX DUKE {3}

Dam: JX D&E Value Plum 12498 {2}, 91%

4-10 287 21,990 4.8% 1,045 3.7% 807 102DCR

JX Avi-Lanche Got Maid Alice 19218 {6}-Twin

Projected to 25,623—1,072—987 ME at 1-9

+1,356M +57F +62P +\$569CM GJPI +170

CDCB: GPTA S 12/19 79%R BBR 100 JH1C

Grandam: Avi-Lanche Bowman Alice 13212, 84%

4-4 305 19,240 5.3% 1,018 3.9% 747 103DCR

JX Avi-Lanche Got Maid Alice 19217 {6}-Twin

Projected to 22,538—1,077—865 ME at 1-8

+1,251M +71F +53P +\$596CM GJPI +170

CDCB: GPTA S 12/19 79%R BBR 100 JH1F

Daughter by CRAZE

Twin sister to "19218." Their dam is a 84% VICEROY.

JX Avi-Lanche Got Maid Dede 19420 {6}-ET

Projected to 21,720—1,129—896 ME at 1-8

+1,014M +73F +58P +\$637CM GJPI +188

CDCB: GPTA S 12/19 78%R BBR 100 JH1C

Her polled son DIMITRI-P is at Jerseyland Sires, GJPI +197

Dam: JX Avi-Lanche Commistionr Dede 13710 {5}, 91%

2-10 305 22,020 5.0% 1,092 3.8% 833 103DCR

JX Avi-Lanche GTMaid Sunshine 19720 {6}-ET

Projected to 24,914—1,102—918 ME at 1-7

+1,362M +58F +57P +\$558CM GJPI +169

CDCB: GPTA S 12/19 78%R BBR 100 JH1F

Daughter by JX SHOCK {5}

Dam: D&E Daybreak Sunshine 7260, 88%

2-9 305 25,370 4.4% 1,126 3.7% 928 103DCR

JX Avi-Lanche Got Maid Rhodes 19186 {5}

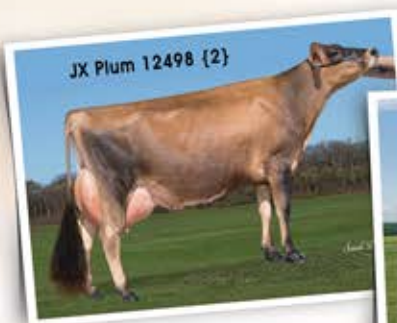
Projected to 23,369—1,254—886 ME at 1-11

+1,209M +79F +52P +\$588CM GJPI +169

CDCB: GPTA S 12/19 78%R BBR 100 JH1F

Grandam: D&E Valentino Rhodes 8743, 82%

3-10 305 24,660 4.6% 1,144 3.7% 922 103DCR



Volume 67 | January 2020

AVI-LANCHE JERSEYS

Visit us on the web at <http://avilanche.usjerseyjournal.com/>

The Richard Avila Family | Jennifer, Sidney and Caitlin Avila

13390 U.S. Hwy. 385, Dalhart, Texas 79022

Jorge Estrada, Dairy Herd Manager • 806/333-5142 • Email: jaestrada1088@gmail.com

Alex Steer, Genetics • 806/884-9072 • Email: steer@vt.edu

www.facebook.com/thehappiestcows



D & E JERSEYS

The Donald S. Sherman Family

Elsa Sherman and Wyatt Taylor