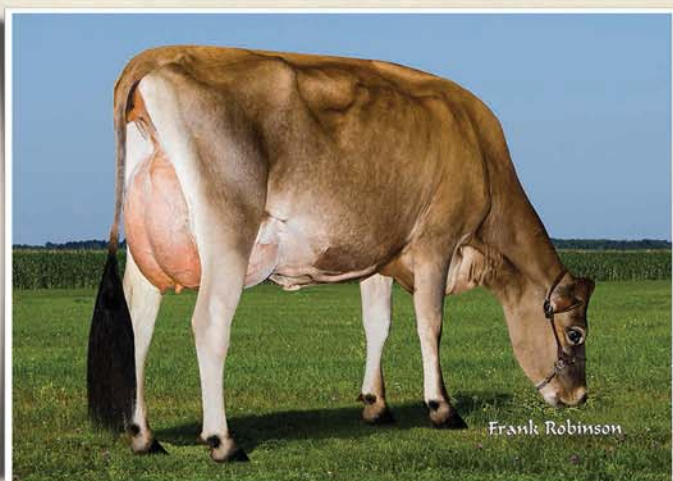


Leading GENOMICS

THE KIND WE ENJOY DEVELOPING GENERATION AFTER GENERATION

#1 for GJUI

Among cows ranked on the Top 200 GJPI List



Avi-Lanche Valentino Bell 8754, VG-85%

Projected to 26,801 -1,073 -927 ME at 1-8

YD: +3,867M +29F +104P

+5.0PL Type +2.0 GJUI +32.1 GJPI +184

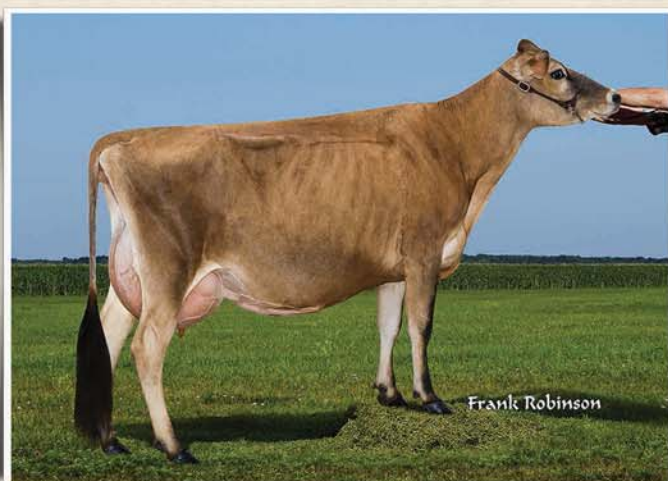
CDCB: GPTA 8/15 77%R JH1C

VALENTINO x ACADEMY x SPECIAL FORCES

She has P9 January calf by Faria Brothers Combo.

Top 25 for Productive Life

Among Top 500 GJPI Females



Pictured above her dam Avi-Lanche Milton Dede 8232{5}

Avi-Lanche Commissioner Dede 13710{5}, P9

Born: September 1, 2014

+\$546CM +6.4PL GJUI +17.9 GJPI +192

CDCB: GPTA 8/15 60%R JH1C

COMMISSIONER{4} x MILTON{4} x GR HUGO{3}

"Dede 13710" will be entering our flush program.

Avi-Lanche and D&E Jerseys would like to thank Benny Rector and family for their years of dedication to the improvement of genetics and the cultivation of great cow families in both California and Texas. Avi-Lanche and D&E wish Benny the best of luck in all his future endeavors with the Jersey breed in the years to come.

Visit us on the web at <http://avilanche.usjersey.com>

D & E JERSEYS

The Donald S. Sherman Family
Elsa Sherman and Wyatt Taylor



AVI-LANCHE JERSEYS

Richard, Jennifer, Sidney and Caitlin Avila

13390 U.S. Hwy. 385, Dalhart, Texas 79022

Alex Steer, Dairy Herd Manager • 806/884-9072 • Email: steer@vt.edu