

D&E Legal Kira 22022, 86%

4-3 305 24,920 4.8% 1,206 3.7% 922 99DCR

Ranks on the Top 1.5% GJPI Cow List at +147

LEGAL x ABE {6} x ROCKET

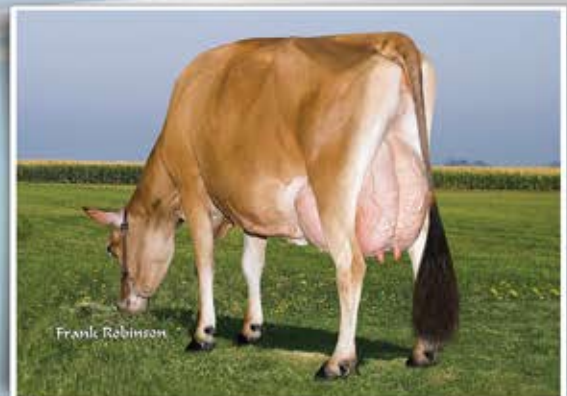
In our conventional flush program.

Progeny update:

Her DIMENSION son is +214 GJPI and heading to ABS Global.
 Daughters by PRESCOTT, PAUL, VIRTUAL, and PLUS {5}.

Tried and True

A few of our top cow families.



All Lynns Impuls Virtue-ET, 90%

5-1 305 25,550 5.0% 1,282 3.9% 987 93DCR

Ranks on the Top 1.5% GJPI Cow List at +156

IMPULS x D&E Paramount Violet 90% x D&E Abe Violet, 90%

Currently being flushed in our IVF program.

Progeny update:

Six sons in A.I. including 11JE1085 VALUE

D&E MERCHANT VIRTUE 22228-ET, 93%

Daughters by PERFORM, SPARKY and COLIN

D&E MERCHANT VIRTUE 22230-ET, 86%

Daughters by PAUL, TEE TIME and DIGNITARY

D&E CHAMPS VIRTUE 22328-ET, 83%

PERFORM daughter that is +151 for GJPI

D&E PAUL VIRTUE 23074, 86% GJPI +140

Daughters by GOLDA {3}, HECTOR and MACKENZIE

D&E SANTANA VIRTUE 13663-P-ET GJPI +142

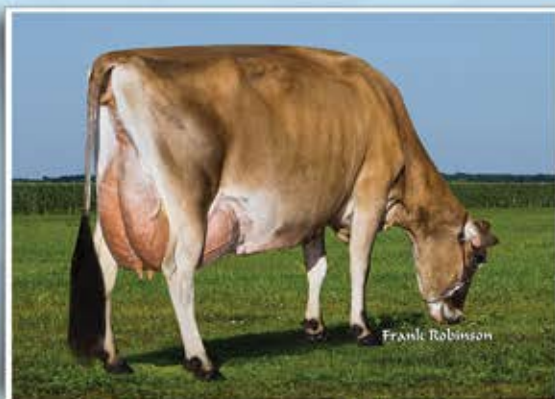
TUPAC {4} daughter that is +170 for GJPI

D&E PERFORM VIRTUE 22820-ET, 84% GJPI +128

TRANSFORMER daughter that is +148 for GJPI

D&E SIXTYNINE VIRTUE 22953 {4}-ET, 87% GJPI +147

Daughters by PLUS {5} and MACKENZIE



D&E Hyatt Blitzen 21548, 93%

5-9 305 25,490 4.6% 1,178 3.8% 965 91DCR

HYATT x D&E Merchant Blitzen 21001, 91% x DUKE

In our conventional flush program and has frozen embryos.

**ASK US ABOUT OTHER COWS
 IN OUR EMBRYO PROGRAM!**

Visit us on the web at <http://avilanche.usjersey.com>

D & E JERSEYS

The Donald S. Sherman Family
 Elsa Sherman and Wyatt Taylor

www.facebook.com/thehappiestcows



AVI-LANCHE JERSEYS

Richard, Jennifer, Sidney and Caitlin Avila
 13390 U.S. Hwy. 385, Dalhart, Texas 79022

Alex Steer, Dairy Herd Manager • 806/884-9072 • Email: steer@vt.edu