

# Persistent PRODUCTION

THE MATRIARCH OF THE BREED'S MOST POPULAR GENOMIC FAMILY.



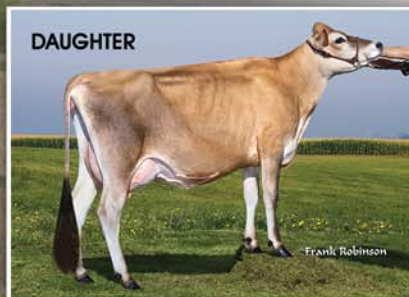
Frank Robinson



DAUGHTER

**D&E Paramount Violet, 90%**

5-2 305 3x 27,600 4.2% 1,167 3.5% 952  
36 sons in A.I. with eight ranked among  
the top 20 of the Active A.I. list  
Owned by David Allen, WI



DAUGHTER

**D&E Merchant Violet 50010-ET, 85%**

2-10 305 21,240 5.3% 1,135 3.6% 760



GRAND  
DAUGHTER

**All Lynns Impuls Virtue-ET, 88%**

5-1 305 25,550 5.0% 1,282 3.9% 987

**D&E Abe Violet, 90%**

3-3 305 20,980 4.8% 1,003 3.7% 768 97DCR  
6-6 305 22,060 4.2% 923 3.6% 791 99DCR

FINALIST in the GREAT COW CONTEST

A few of her top daughters:

**D&E Carrier Violet 21706-ET, 90%**

Projected to 26,680 - 1,134 - 857 ME at 3-6

**D&E Lotto Violet 50041-ET, 82%**

2-9 267 19,680 5.1% 1,004 3.6% 711

**D&E Merchant Violet 50030-ET, 88%**

1-9 277 17,560 5.0% 881 3.8% 673

**D&E Critic Violet**

**50073-ET, 85%**

1-8 305 20,510 4.4% 911 3.4% 699

**D&E Cactus Jack**

**Violet 50022-ET, 86%**

2-9 305 22,630 5.0% 1,123 3.5% 794

Owned by Ken Vanfoeken Dairy, CA

**D&E Topeka Violet 50117-ET**

Projected to 24,020 - 1,080 - 823 ME at 1-8

IN OUR FLUSH PROGRAM

**D&E Marvel Violet 22881, 80%**

Daughter of "Cactus Jack Violet 50022"

**D&E Perform Virtue 22820-ET, 80%**

Projected to 25,090 - 1,105 - 821 ME at 1-9

Daughter of "Impuls Virtue"

Embryos to "Transformer," "Tybo,"  
"Lanny," and "Fearless."

Learn more about our flush program at  
[www.fastforwardgenetics.com](http://www.fastforwardgenetics.com)

Visit us on the web at <http://avilanche.usjersey.com>

## D & E JERSEYS

The Donald S. Sherman Family

Elsa Sherman and Wyatt Taylor

Benny Rector, Director of Marketing • 209/495-8312

Email: [rjfwest@hotmail.com](mailto:rjfwest@hotmail.com)



[www.facebook.com/thehappiestcows](http://www.facebook.com/thehappiestcows)



## AVI-LANCHE JERSEYS

Richard, Jennifer, Sidney and Caitlin Avila

13390 U.S. Hwy. 385, Dalhart, Texas 79022

Alex Steer, Dairy Herd Manager • 806/884-9072 • Email: [steer@vt.edu](mailto:steer@vt.edu)