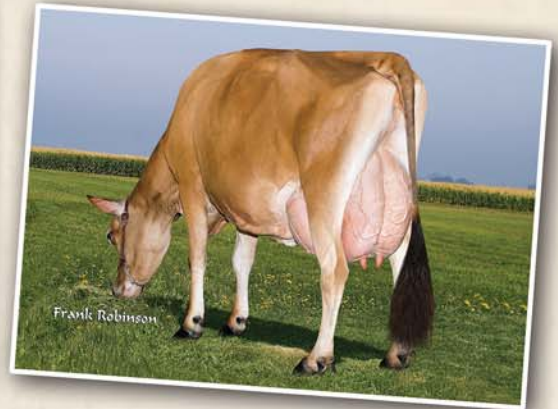
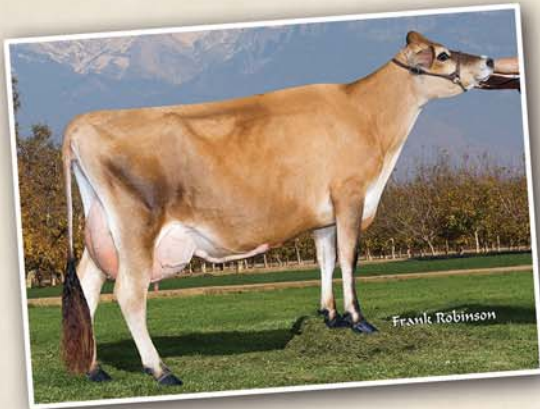


Persistent PRODUCTION

2014 AJCA Lactation Average on 2,122 cows

22,874M 1,099F 843P

Within our herd size of 750 or more records we rank
4th for protein | 4th for fat | 6th for milk



EMBRYOS AVAILABLE FROM FAST FORWARD GENETICS

from the top of our herd.

Give us a call for a complete listing of embryo availability.

Our 2015 Great Cow Contest nominee "Abe Violet" and her descendents are at the heart of our breeding program.



Visit us on the web at <http://avilanche.usjersey.com>

D & E JERSEYS

The Donald S. Sherman Family
Elsa Sherman and Wyatt Taylor

Benny Rector, Director of Marketing • 209/495-8312
Email: rjfwest@hotmail.com



www.facebook.com/thehappiestcows



AVI-LANCHE JERSEYS

Richard, Jennifer, Sidney and Caitlin Avila

13390 U.S. Hwy. 385, Dalhart, Texas 79022

Alex Steer, Dairy Herd Manager • 806/884-9072 • Email: steer@vt.edu