

TOP GENOMICS

offered this summer on the west coast

NATIONAL HEIFER SALE | JULY 2

D&E MacKenzie Kira

15260-ET, P9

Born: August 18, 2015

Sire: Misiska MacKenzie-ET

+81F +47P +\$603CM

GJPI +200 CDCB: GPTA 5/16 68%R JH1C



Both heifers rank on the
Top 500 Female List

SPLASH IN THE OCEAN | JULY 16

Avi-Lanche Mr Cool Leta

14342 {5}, P9

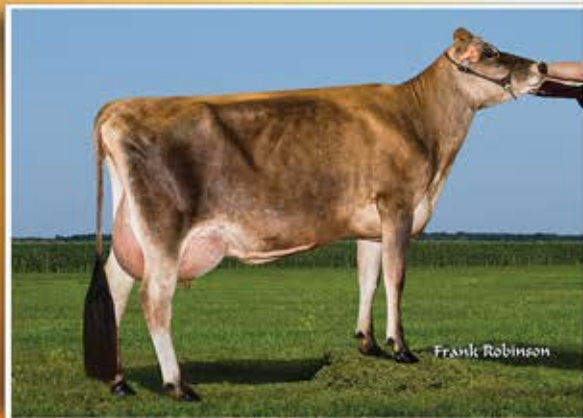
Born: January 22, 2015

Sire: Wilsonview Sbstn Mr Cool {4}-ET

+1,296M +6.0PL GJPI +188

CDCB: GPTA 5/16 69%R JH1F

Due September 6 to "Ronaldo {3}"



Dam: **D&E Virtual Kira 23078, VG-82%**
1-8 305 19,350 5.1% 987 3.7% 710 84DCR
Ranks 53rd for GJPI among cows
GJPI +189 CDCB: GPTA 5/16 77%R JH1C



Dam: **D&E Valentino Leta 8732, E-90%**
1-9 291 20,190 4.0% 806 3.4% 684 96DCR
Projected to 22,453M, 954F, 785P actual at 2-8
Ranks 46th for GJPI among cows
GJPI +191 CDCB: GPTA 5/16 80%R JH1C



The next dam is D&E Legal Kira 22022, VG-86%, with two records over 23,000M and 1,000F (pictured left). The next two dams are sired by "Abe {6}" and "Rocket" with over 19,000M.

The next dam is a Very Good "Sparky" with two records over 21,000M followed by two more Very Good dams with over 16,000M actual.

Add genomic value to your herd and bid last!

Visit us on the web at <http://avilanche.usjersey.com>

D & E JERSEYS

The Donald S. Sherman Family
Elsa Sherman and Wyatt Taylor

www.facebook.com/thehappiestcows



AVI-LANCHE JERSEYS

Richard, Jennifer, Sidney and Caitlin Avila

13390 U.S. Hwy. 385, Dalhart, Texas 79022

Alex Steer, Dairy Herd Manager • 806/884-9072 • Email: steer@vt.edu