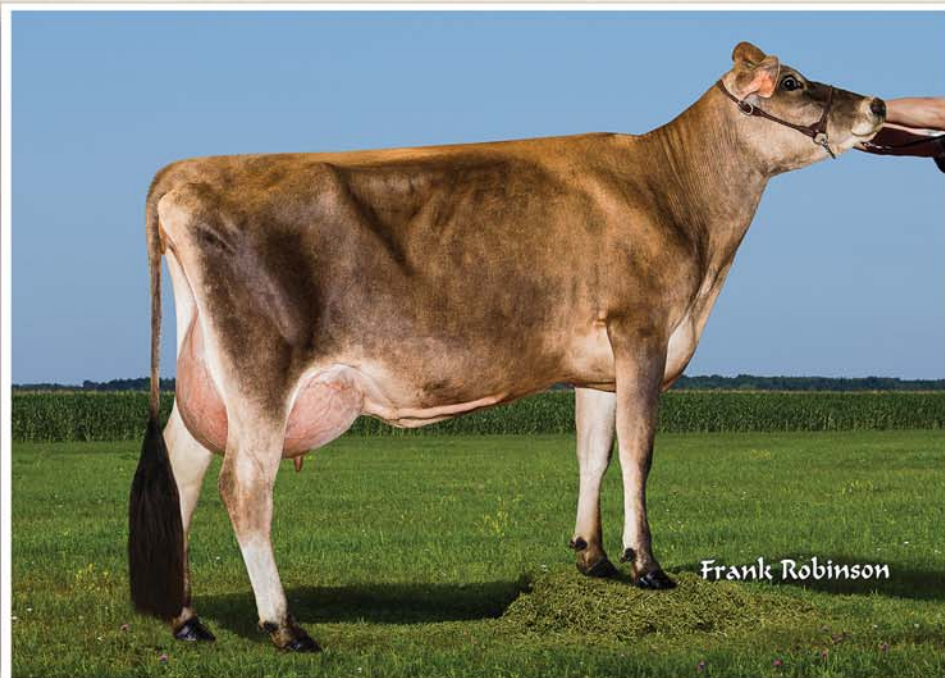


A leading cow family with

# Top GENOMICS



## D&E Virtual Kira 23078, 82%

Proj. to 21,020 -1,104 -718 ME  
at 1-8 • 110%RV

61 lbs. milk, 5.6%F, 3.4%P

+1,168M +51F +50P +\$481CM  
+\$454NM GJPI +188

CDCB: GPTA 6/15 67%R JH1C

14J630 JUMBO daughter born  
April 3, 2015.

Currently in our flush  
program.



## Genex

**Sister to ...**

## D&E Plus Kira 22992-ET, 82%

Proj. to 23,930 -1,188 -870 ME at 1-8 • 118%RV

GJPI +147 CDCB: GPTA 6/15 75%R JH1C

## 1JE880 D&E Plus KING KONG-ET

Sire: 1JE711 Sweetie PLUS latolas Bold

+1,144M +\$456CM GJPI +172 CDCB: GPTA 4/15 70%R JH1C

Learn more about our flush program at  
[www.fastforwardgenetics.com](http://www.fastforwardgenetics.com)

Their dam: **D&E Legal Kira 22022,**  
**86%,** with 23,960M, 1,054F, 876P  
actual at 2-11 and is +168 for GJPI

Visit us on the web at <http://avilanche.usjersey.com>

## D & E JERSEYS

The Donald S. Sherman Family

Elsa Sherman and Wyatt Taylor

Benny Rector, Director of Marketing • 209/495-8312

Email: [rjfwest@hotmail.com](mailto:rjfwest@hotmail.com)



[www.facebook.com/thehappiestcows](http://www.facebook.com/thehappiestcows)



Thanks to the Spielman family at Heartland Jerseys for their friendship and working relationship through the years. It is a privilege for us to assume your space on the back cover of the Jersey Journal. We wish you the best in your retirement!

## AVI-LANCHE JERSEYS

Richard, Jennifer, Sidney and Caitlin Avila

13390 U.S. Hwy. 385, Dalhart, Texas 79022

Alex Steer, Dairy Herd Manager • 806/884-9072 • Email: [steer@vt.edu](mailto:steer@vt.edu)