

# D - E - D - E SONS HEADING TO A.I.

We are enjoying working with our "Dede" family. They have leading genomics, perform well, and they continue to transmit generation after generation.



## JX Avi-Lanche Commisionr Dede 13710 {5}, 85%

1-7 305 19,620 4.8% 947 3.7% 729 103DCR

Ranks 53<sup>rd</sup> for GJPI among cows +8.0PL GJUI +20.6 GJPI +168

GC 3 or GC 4-6 with BBR 93 and Lower CDCB: GPTA 12/17 77%R BBR 93 JH1C JH2F

Sire: JX 5T Commissioner {4}-ET

Sons by JX LUKE {2} and JX RONALDO {3} are heading to ABS Global. GJPI's range from +186 to +194

## JX Avi-Lanche Volcano Dede 15794 {5}, 83%

Ranks on the Top 1.5% GJPI Cow List at +138

CDCB: GPTA 12/17 78%R BBR 100 JH1C JH2F

Sire: All Lynns Legal Volcano-ET

## JX Avi-Lanche Milton Dede 8232 {5}, 86%

2-7 305 22,100 4.9% 1,088 3.6% 801 103DCR

3-8 305 22,100 5.1% 1,125 3.8% 837 103DCR

Ranks on the Top 1.5% GJPI Cow List at +123

CDCB: GPTA 12/17 81%R BBR 100 JH1C JH2F

Sire: JX Wilsonview N Milton {4}

Dam of "13710."

Her VALUE son JX DEFY {6} is at Jerseyland Sires.



## BUY INTO THE "VIRTUE" FAMILY!

Selling  
February 14:

### JX Avi-Lanche Uncluke Virtue18313 {3}-ET

+1,238M +106CFP GJPI +186

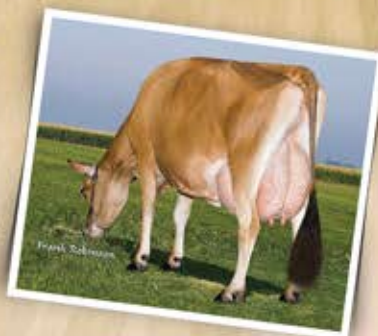
CDCB: GPTA 12/17 70%R BBR 100 JH1F JH2F

Sire: JX Faria Brothers Uncle Luke {2}-ET

Dam All Lynns Impuls Virtue-ET, 90%,

pictured right, then

D&E Paramount Violet, 90%.



## AVI-LANCHE JERSEYS

Richard, Jennifer, Sidney and Caitlin Avila  
13390 U.S. Hwy. 385, Dalhart, Texas 79022

Alex Steer, Dairy Herd Manager • 806/884-9072 • Email: [steer@vt.edu](mailto:steer@vt.edu)

Visit us on the web at <http://avilanche.usjersey.com>



[www.facebook.com/thehappiestcows](http://www.facebook.com/thehappiestcows)

## D & E JERSEYS

The Donald S. Sherman Family  
Elsa Sherman and Wyatt Taylor

