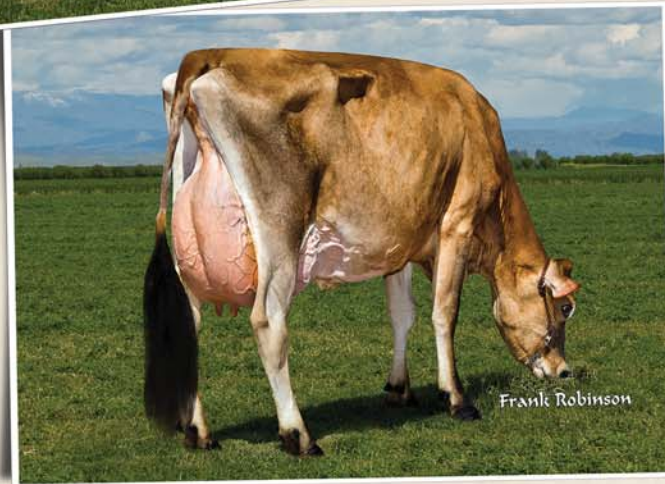
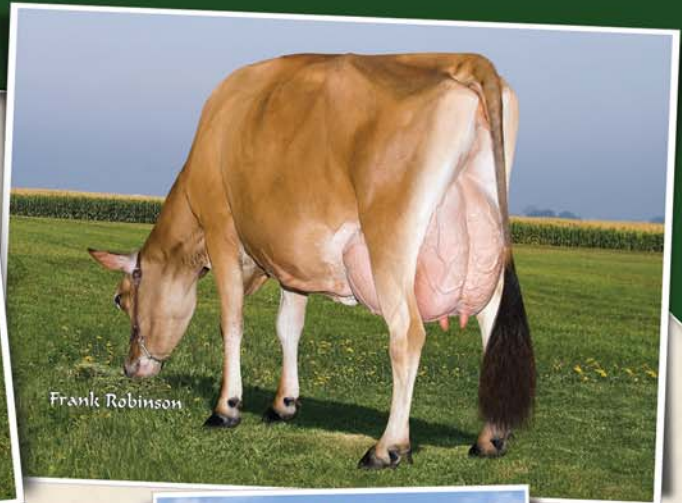
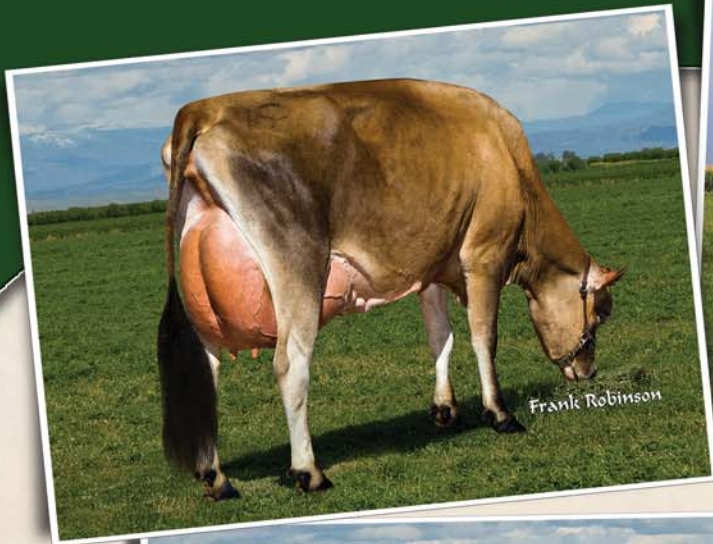


Persistent PRODUCTION



EMBRYOS AVAILABLE FROM FASTFORWARD GENETICS

from cows like these!

7 conventional embryos

HECTOR x D&E Paul Virtue 23074 x All Lynns Impuls
Virtue-ET, 88% x D&E Paramount Violet, 90%
Virtual PA +1,143M +54F +46P JPI +188

12 conventional embryos

GR MARLO x Kane-Lane V Radison, 83%
x Kane-Lane Jace Madison, 90%
Virtual PA +\$465CM +4.5PL JPI +185

Give us a call for a complete listing of embryo availability.

Visit us on the web at <http://dejerseys.usjersey.com>

D & E JERSEYS

The Donald S. Sherman Family
Elsa Sherman and Wyatt Taylor

Benny Rector, Director of Marketing • 209/495-8312
Email: rjfwest@hotmail.com



www.facebook.com/thehappiestcows



AVI-LANCHE JERSEYS

Richard, Jennifer, Sidney and Caitlin Avila

13390 U.S. Hwy. 385, Dalhart, Texas 79022

Alex Steer, Dairy Herd Manager • 806/884-9072 • Email: steer@vt.edu