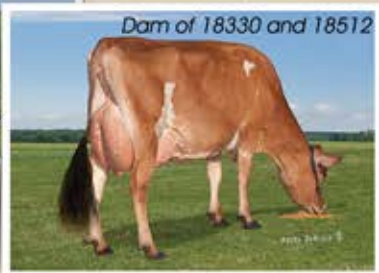
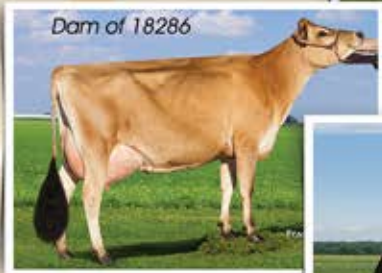
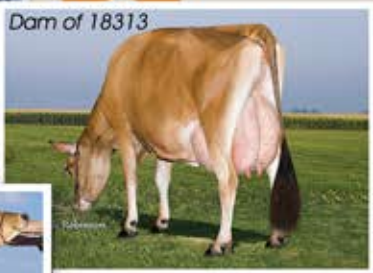
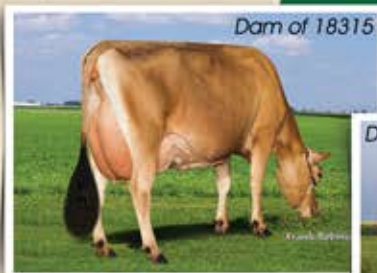


Up and Coming Stars in our IVF Program!



JX Avi-Lanche Uncluke Virtue 18313 {3}-ET

Great production and health traits from the "Violets"
+1,313M +62F +51P +6.6PL +2.3DPR GJPI +192
CDCB: GPTA 11/17 78%R BBR 100 JH1F JH2F

JX UNCLE LUKE {2} x All Lynns Impuls Virtue-ET, 90% x D&E Paramount Violet, 90%

JX Avi-Lanche CMPNE Sunshine 18315 {4}

Consistent production from the "Sunshine" family!
+1,341M +53F +47P +7.3PL GJPI +162
CDCB: GPTA 11/17 78%R BBR 100 JH1F JH2F

JX CAMPEONE {3} x D&E Viceroy Sunshine 13484-ET, 85% x 85% DAYBREAK

JX Avi-Lanche Uncle Luke Dede 18330 {3}-ET

Outstanding production and health traits.
+1,021M +60F +45P +2.3DPR GJPI +175
CDCB: GPTA 11/17 78%R BBR 100 JH1F JH2F

JX UNCLE LUKE {2} x JX Avi-Lanche Comisionr Dede 13710 {5}, 85% x 86% JX MILTON {4}

JX Avi-Lanche Pele Dede 18512 {4}-ET

Great type and GJUI!
+8.6PL Type +2.1 GJUI +31.1 GJPI +180
CDCB: GPTA 11/17 78%R BBR 92 JH1F JH2F

JX PELE {3} x JX Avi-Lanche Comisionr Dede 13710 {5}, 85% x 86% JX MILTON {4}

JX Avi-Lanche Campeone Poem 18286 {4}

Outstanding health traits and GJUI!
+10.0PL +1.8DPR +3.3LIV Type +1.7 GJUI +32.0 GJPI +177
CDCB: GPTA 11/17 78%R BBR 100 JH1F JH2F

JX CAMPEONE {3} x D&E Visionary Poem 15146, 83% x 84% HEADLINE

Contact Alex to work with exciting
new donors in December and January!

Thank you

to all the buyers of our genetics this year. We wish you the best with your purchases in years to come!

Happy Holidays



AVI-LANCHE JERSEYS

Richard, Jennifer, Sidney and Caitlin Avila
13390 U.S. Hwy. 385, Dalhart, Texas 79022
Alex Steer, Dairy Herd Manager • 806/884-9072 • Email: steer@vt.edu



Find us on Facebook
www.facebook.com/thehappiestcows

D & E JERSEYS

The Donald S. Sherman Family
Elsa Sherman and Wyatt Taylor

