

Expressing her **VALUE** IN THE JERSEY POPULATION

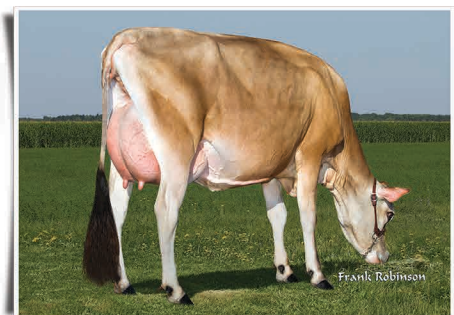
683 registered maternal progeny from "Abe Violet" and numerous paternal progeny from her 42 sons, 102 grandsons, 112 great grandsons!



D&E Abe Violet, 90%

3-3 305 20,980 4.8% 1,003 3.7% 768 97DCR
 6-6 305 22,060 4.2% 923 3.6% 791 99DCR

"Abe Violet" and her daughter "Paramount Violet" are the only mother-daughter duo to both be voted in as finalists in the 2015 Great Cow Contest.



D&E Headline Violet 50004-ET, 83%

1-9 305 18,490 4.6% 851 3.3% 611 100DCR
 Daughter of "Abe Violet"

50004 daughter doing well:

D&E Critic Violet 22811-P, 88% at 2-11

1-9 281 18,020 4.2% 748 3.3% 603 102DCR
 Ranks on the Top 1.5% GJPI Cow List
 +1,235M +3.7PL GJPI +125
 CDCB: GPTA 11/15 77%R JH1C

The breed has seen much influence from the "Violets."

Show your support and vote for the *Matriarch* of this strong family!

Merry Christmas
 AND Happy New Year!

Visit us on the web at <http://avilanche.usjersey.com>

D & E JERSEYS

The Donald S. Sherman Family
 Elsa Sherman and Wyatt Taylor

AVI-LANCHE JERSEYS

Richard, Jennifer, Sidney and Caitlin Avila
 13390 U.S. Hwy. 385, Dalhart, Texas 79022

Alex Steer, Dairy Herd Manager • 806/884-9072 • Email: steer@vt.edu



www.facebook.com/thehappiestcows

