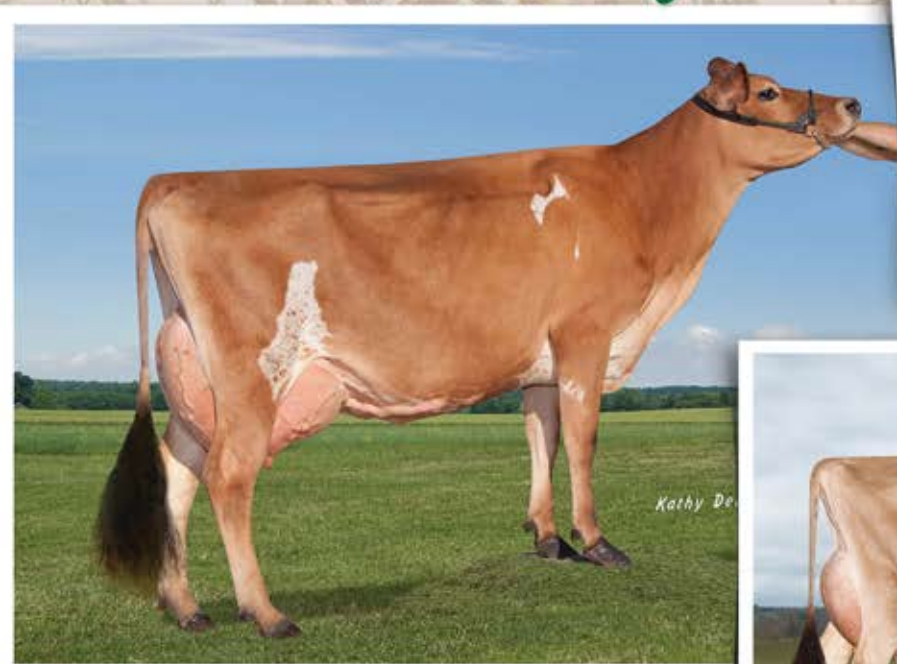


D - E - D - E Spells Profit

We are enjoying working with our "Dede" family. They have leading genomics, perform well, and they continue to pass along these genes generation after generation.



JX Avi-Lanche Commisionr Dede 13710 {5}, 84%

1-7 305 19,620 4.8% 947 3.7% 729 103DCR

Ranks 37th for GJPI among cows
 (GC 3 or GC 4-6 with BBR 93 or lower)

+\$578CM +7.0PL GJUI +19.9 GJPI +164
 CDCB: GPTA 7/17 75%R BBR 93 JH1C JH2F

Sire: JX 5T Commissioner {4}-ET

She has an April 2016 NEWS daughter that is +128
 GJPI and three genotyped sons by JX LUKE {2}
 ranging from +174 to +205 GJPI.

Dam: **JX Avi-Lanche Milton Dede 8232 {5}, 86%**

2-7 305 22,100 4.9% 1,088 3.6% 801 103DCR
 Projected to 22,157M, 1,121F, 833P actual at 3-8

Ranks on the Top 1.5% GJPI Cow List at +123
 CDCB: GPTA 7/17 81%R BBR 100 JH1C JH2F

Sire: JX Wilsonview N Milton {4}

Her VALUE son JX DEFY {6} is at Jerseyland Sires and
 she has a JX MARLO {2} daughter that is +169 GJPI.



AVI-LANCHE JERSEYS

Richard, Jennifer, Sidney and Caitlin Avila
 13390 U.S. Hwy. 385, Dalhart, Texas 79022
 Alex Steer, Dairy Herd Manager • 806/884-9072 • Email: steer@vt.edu

Visit us on the web at <http://avilanche.usjersey.com>



www.facebook.com/thehappiestcows

D & E JERSEYS

The Donald S. Sherman Family
 Elsa Sherman and Wyatt Taylor

