

# Good Udders are Vital

... our leading cows for Genomic Jersey Udder Index.



## Avi-Lanche Gamgee Belissa 12351 {2}, 84%

1-9 305 20,460 4.7% 954 3.3% 677 102DCR  
 +1,130M Type +1.7 **GJUI +29.2** GJPI +153  
 CDCB: GPTA 7/16 61%R JH1F BBR 83  
 GAMGEE x MEDALIST

### OTHER HIGHLIGHTS INCLUDE:

D&E Thor Sal 13672 {4}, 82% **GJUI +30.3**  
 Projected to 22,596—1,074—837 ME at 1-7

D&E Ladd Sue 23061 {5}, 87% **GJUI +29.2**  
 1-8 305 15,420 5.2% 802 3.8% 580 88DCR

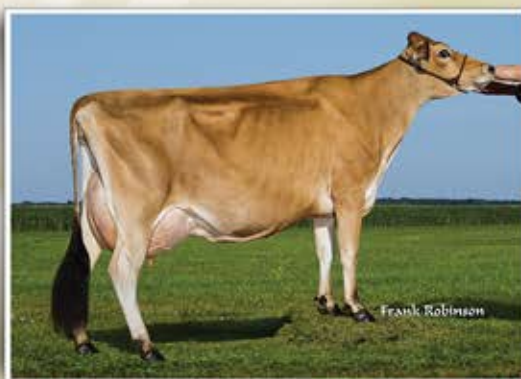
*Thank you* to Jason Faria, TX, for purchasing D&E Mackenzie Kira 15260-ET at the National Heifer Sale. Best of luck with her in your breeding program. We were also pleased to bring home two heifers from the sale; Crescent Premium Gudlady {5}-ET and Forest Glen Clearvision Jadey. We look forward to developing them in our herd.

Also thank you to Matthew Lawrence, CA, for your purchase of Avi-Lanche Mr Cool Leta 14342 at the Splash in the Ocean at Sunset Canyon. Best of luck with her.



## Avi-Lanche Valentino Bell 8754, 85%

1-8 305 20,430 4.3% 885 3.5% 713 96DCR  
 +1,101M +5.9 PL Type +2.0 **GJUI +29.2** GJPI +168  
 CDCB: GPTA 7/16 78%R JH1C BBR 100  
 VALENTINO x ACADEMY x SPECIAL FORCES  
 She has a January 2015 COMBO {3} daughter, GJPI +175.



## D&E Abbott Blitzen 22490-ET, 90%

2-10 269 20,610 4.5% 919 3.5% 725 102DCR  
 +873M Type +1.3 **GJUI +22.8** GJPI +119  
 CDCB: GPTA 7/16 81%R JH1F BBR 100  
 ABBOTT x MERCHANT x DUKE

Visit us on the web at <http://avilanche.usjersey.com>

## D & E JERSEYS

The Donald S. Sherman Family  
 Elsa Sherman and Wyatt Taylor



[www.facebook.com/thehappiestcows](http://www.facebook.com/thehappiestcows)

## AVI-LANCHE JERSEYS

Richard, Jennifer, Sidney and Caitlin Avila  
 13390 U.S. Hwy. 385, Dalhart, Texas 79022  
 Alex Steer, Dairy Herd Manager • 806/884-9072 • Email: [steer@vt.edu](mailto:steer@vt.edu)