



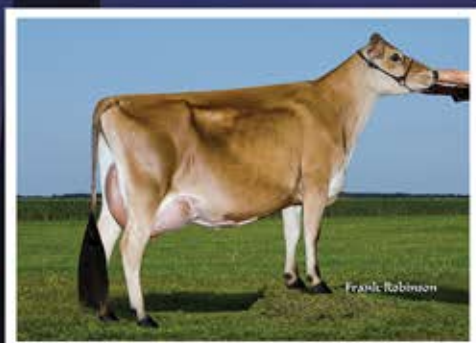
JX D&E Sixtynine Virtue 22953 {4}-ET, 87%

1-10 301 20,990 4.4% 925 3.4% 718 94DCR
 2-10 305 25,650 4.5% 1,166 3.4% 877 103DCR

• Top 1.5% for GJPI at +150

JX SIXTYNINE {3} daughter of "Impuls Virtue"

Daughters in the herd by PLUS {5} and MACKENZIE.



D&E Perform Virtue 22820-ET, 84%

2-9 305 22,580 4.4% 993 3.5% 790 103DCR

PERFORM daughter of "Impuls Virtue"

She has a TRANSFORMER daughter.

Other daughters of "Impuls Virtue"

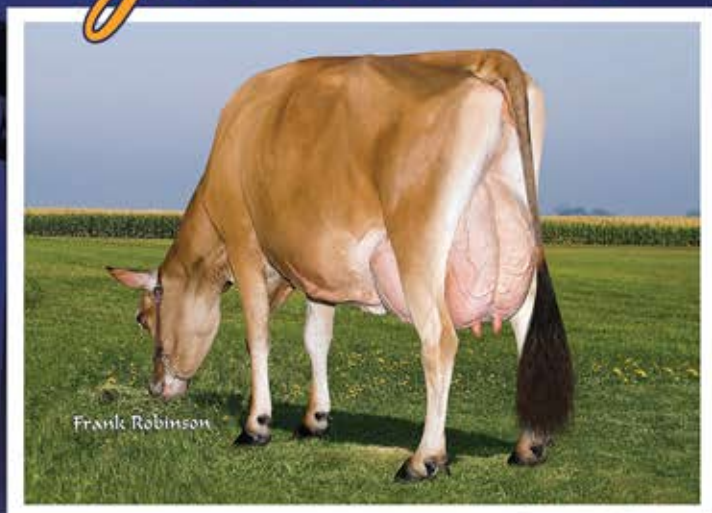
D&E Santana Virtue 13663-P-ET, 83% GJPI +158

D&E Kilowatt Virtue 13714-ET, 83% GJPI +151

D&E Paul Virtue 23074, 86% GJPI +140

Offspring by JX GOLDA {3}, HECTOR, MACKENZIE and JX UNCLE {2}

We've Got
Good Virtue



All Lynns Impuls Virtue-ET, 90%

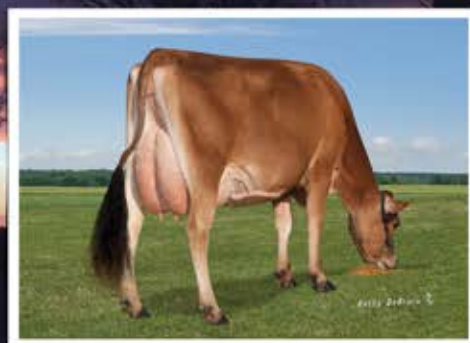
5-1 305 25,550 5.0% 1,282 3.9% 987 93DCR

• Top 1.5% for GJPI at +154

IMPULS x D&E Paramount Violet, 90% x D&E Abe Violet, 90%

Six sons in A.I. including VALUE and VERN-P both at Jerseyland Sires.

VERN-P is -1.2 Stature BBR100 JH1F JH2F



VERN-P daughter:

Avi-Lanche Vern Mia 13848 {3}, 85%

Projected to 24,642—1,315—946 ME at 1-7



AVI-LANCHE JERSEYS

Richard, Jennifer, Sidney and Caitlin Avila
 13390 U.S. Hwy. 385, Dalhart, Texas 79022
 Alex Steer, Dairy Herd Manager • 806/884-9072 • Email: steer@vt.edu



www.facebook.com/thehappiestcows

D & E JERSEYS

The Donald S. Sherman Family
 Elsa Sherman and Wyatt Taylor