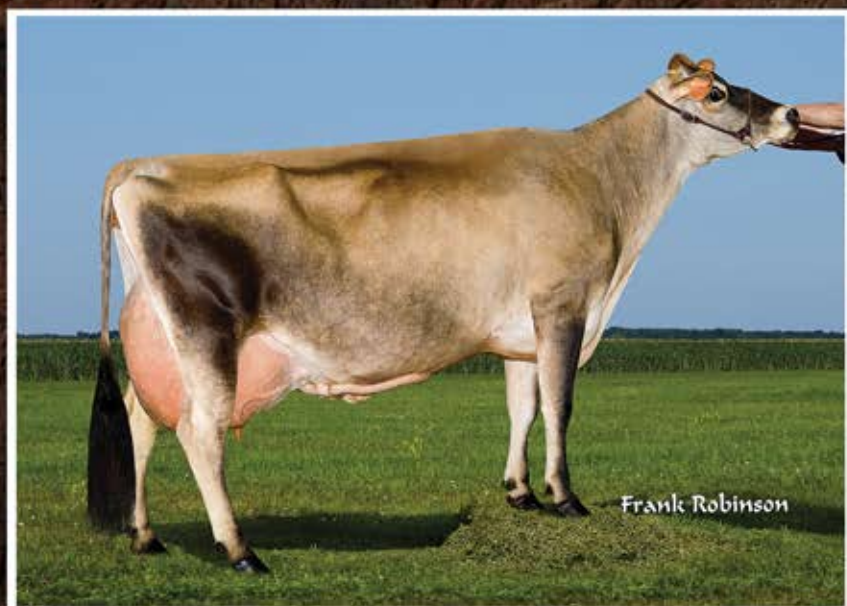


# WE LIKE *Cows that Last*

... so Productive Life matters! These all have over +6.0PL.



### D&E Headline Candy 22083, 91%

2-9 305 21,070 4.8% 1,012 3.7% 773 96DCR  
 3-9 305 20,960 4.5% 933 3.6% 755 103DCR  
**+6.1PL GJPI +140** CDCB: GPTA 3/16 3/16 78%R

HEADLINE x JEVON x SUNNY

### D&E Vibrant Nevi 12329{5}

Proj. to 23,648—1,156—828 ME at 1-8

**+6.6PL GJPI +154**

CDCB: GPTA 3/16 73%R JH1F

VIBRANT x GR LAWSON{3} x ROCKET

### D&E Viabull Patsy 13691, P9

Born: August 29, 2014

**+6.6PL GJPI +150**

CDCB: GPTA 3/16 73%R JH1F

VIABULL-P x REBEL x KARL

### D&E Flashback Sandie

**14204{5}, P9**

Born: December 25, 2014

**+6.6PL GJPI +129**

CDCB: GPTA 3/16 67%R JH1F

FLASHBACK{4} x GR VACATION{3} x CARRIER

### D&E Valentino Violet 50068-ET

2 lact. avg. 20,843—1,027—816 ME

**+6.4PL GJPI +105**

CDCB: GPTA 3/16 81%R JH1F

VALENTINO x D&E Abe Violet, 90%

### Avi-Lanche Commisionr Dede

**13710{5}, P9**

Born: September 1, 2014

**+6.2PL GJPI +189**

CDCB: GPTA 3/16 61%R JH1C

COMMISSIONER{4} x Avi-Lanche Milton

Dede 8232{5}, 83%

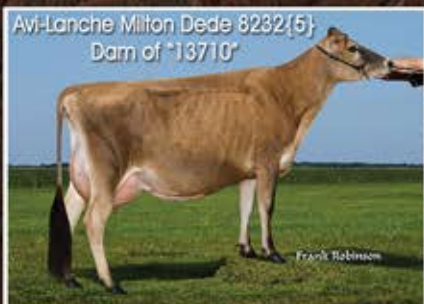
### D&E Valentino Violet 50070-ET

2-10 305 19,050 5.3% 1,005 3.8% 729

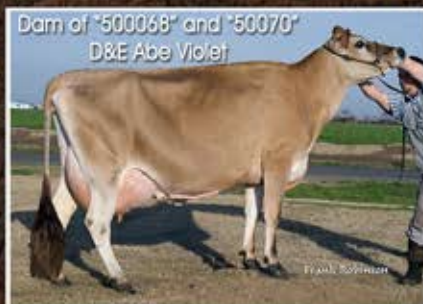
**+6.1PL GJPI +109**

CDCB: GPTA 3/16 81%R JH1F

VALENTINO x D&E Abe Violet, 90%



Avi-Lanche Milton Dede 8232{5}  
 Dam of "13710"



Dam of "500068" and "50070"  
 D&E Abe Violet

Visit us on the web at <http://avilanche.usjersey.com>

## D & E JERSEYS

The Donald S. Sherman Family  
 Elsa Sherman and Wyatt Taylor

[www.facebook.com/thehappiestcows](http://www.facebook.com/thehappiestcows)



## AVI-LANCHE JERSEYS

Richard, Jennifer, Sidney and Caitlin Avila

13390 U.S. Hwy. 385, Dalhart, Texas 79022

Alex Steer, Dairy Herd Manager • 806/884-9072 • Email: [steer@vt.edu](mailto:steer@vt.edu)