

Persistent PRODUCTION

with these

HIGH PROTEIN genomic heifers!

GR Avi-Lanche Harris Leilia 13497, P9

+54P GJPI +244 CDCB: GPTA 3/15 58%R JH1F
Sire: Schultz Volcano Harris
Dam: PR Avi-Lanch Tad 70615 5613, 82%
1-10 302 21,190 4.3% 912 3.7% 792 101DCR

D&E Virtual Kira 23078, P9

+51P GJPI +187 CDCB: GPTA 3/15 66%R JH1C
Sire: D&E Champ Virtual-ET
Dam: D&E Legal Kira 22022, 86%
2-11 305 23,960 4.4% 1,054 3.7% 876 95DCR

Avi-Lanche Valentino Nevada 8569, P9

+51P GJPI +190 CDCB: GPTA 3/15 69%R JH1C
Sire: All Lynns Louie Valentino-ET
Dam: GR Avi-Lanche Vibrant Nevada 5111, 77%
2-8 305 22,900 4.1% 939 3.5% 812 103DCR

D&E Colin Dee 23100, P9

+46P GJPI +112 CDCB: GPTA 3/15 69%R JH1F
Sire: Cal-Mart Vito Colin
Dam: D&E Abbott Dee 22450, 84%
1-8 305 14,670 4.8% 707 3.5% 511 84DCR

D&E Colin Chrisie 23099, P9

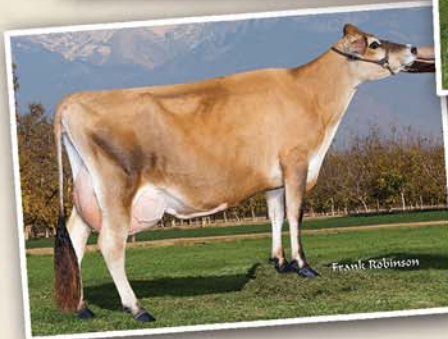
+45P GJPI +101 CDCB: GPTA 3/15 67%R JH1F
Sire: Cal-Mart Vito Colin
Dam: D&E Claude Chrisie, 79%
1-8 305 16,370 4.1% 67 3.3% 533 85DCR

D&E Paul Virtue 23074, P9

+45P GJPI +148 CDCB: GPTA 3/15 72%R JH1F
Sire: D&E Paul-ET
Dam: All Lynns Impuls Virtue-ET, 88%
5-1 305 25,550 5.0% 1,282 3.9% 987 93DCR
Grandam: D&E Paramount Violet, 90% with 27,600M
Third dam: D&E Abe Violet, 90% with 22,060M

Avi-Lanche Magnum Daisy 13334, P9

+44P GJPI +178 CDCB: GPTA 3/15 69%R JH1C
Sire: Wilsonview Jevon Magnum-ET
Dam: D&E Visionary Daisy 22686, 75%
Projected to 23,319-1,068-823 ME at 1-10
Grandam: D&E Vandyke Daisy 22080, 83%
with 19,540M



Top clockwise:
D&E Vandyke Daisy 22080
All Lynns Impuls Virtue-ET
D&E Legal Kira 22022

Check out our website for embryos
available from Fast Forward Genetics
and view their virtual pedigrees.

Visit us on the web at <http://avilanche.usjersey.com>

D & E JERSEYS

The Donald S. Sherman Family
Elsa Sherman and Wyatt Taylor
Benny Rector, Director of Marketing • 209/495-8312
Email: rjfwest@hotmail.com



www.facebook.com/thehappiestcows



AVI-LANCHE JERSEYS

Richard, Jennifer, Sidney and Caitlin Avila
13390 U.S. Hwy. 385, Dalhart, Texas 79022
Alex Steer, Dairy Herd Manager • 806/884-9072 • Email: steer@vt.edu